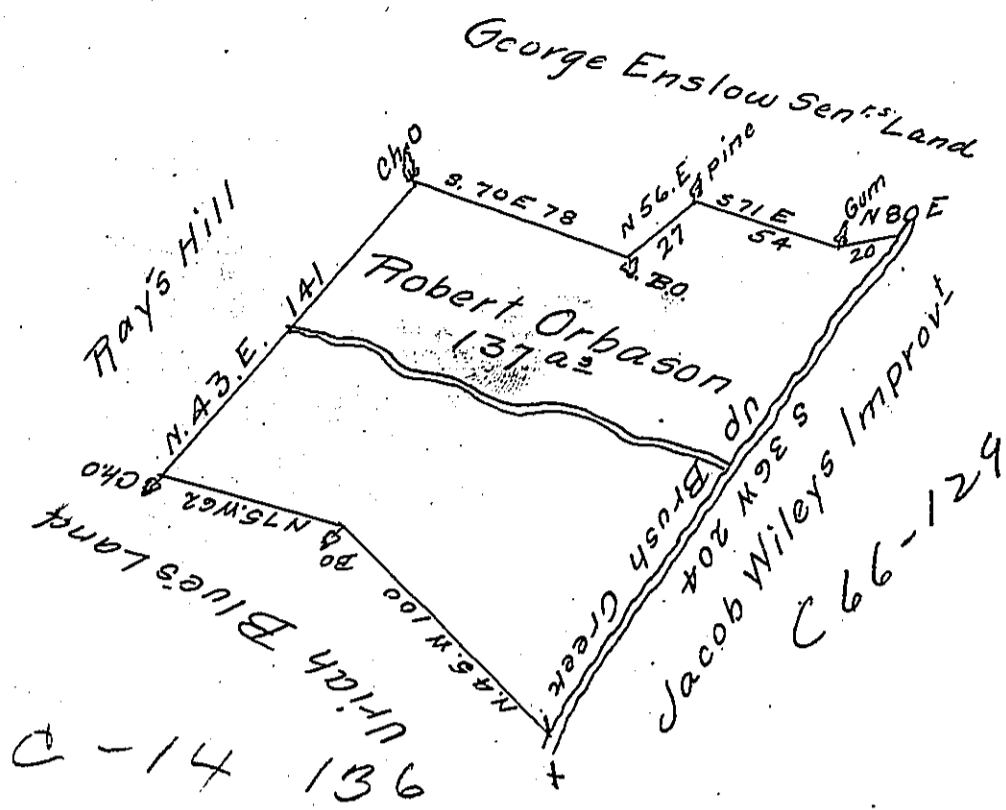


C - 40 - 290



C - 14 - 136

Situated on Brush Creek in Providence Township in the County of Bedford Containing One hundred and thirty seven acres with the usual allowance of six p<sup>r</sup> Cent for roads &c

Surveyed for Robert Orbason the 1<sup>st</sup> day of July 1786 in pursuance of a warrant dated January 4<sup>th</sup> 1786

George Woods D.S.

To John Lukens Esqr S.G.

IN TESTIMONY that the above is a copy of the original remaining on file in the Department of Internal Affairs of Pennsylvania, made conformably to an Act of Assembly approved the 16th day of February, 1833, I have hereunto set my Hand and caused the Seal of said Department to be affixed at Harrisburg, this twentieth day of March 1906

*Isaac P. Brown*  
Secretary of Internal Affairs.